

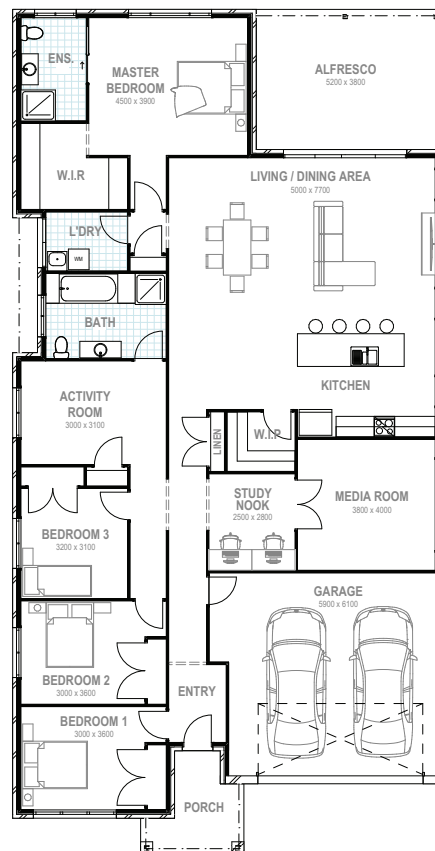
# Diamond 31



Ground Floor (m <sup>2</sup> )	220.15
Alfresco (m <sup>2</sup> )	22.15
Garage (m <sup>2</sup> )	39.80
Porch (m <sup>2</sup> )	6.40
<b>Total (m<sup>2</sup>)</b>	<b>288.50</b>
<hr/>	
Overall Width (m)	12.50
Overall Length (m)	24.55

## FEATURES

- ✓ Master bedroom with ensuite
- ✓ 2 bathrooms
- ✓ Study Nook
- ✓ Generous walk in pantry
- ✓ Activity and Media rooms
- ✓ Flexibility to adapt the floor plan



**BUILDTech**  
HOMES

Contact 02 4648 2154 | [sales@buildtechhomes.com.au](mailto:sales@buildtechhomes.com.au) | [www.buildtechhomes.com.au](http://www.buildtechhomes.com.au)

© Copyright Buildtech Homes. Reproduction in any form either in whole or part is forbidden and shall remain the exclusive property of Buildtech Homes. Plans must not be reproduced, copied, modified, or used without the written consent of Buildtech Homes. All drawings are for illustrative purposes and should be used as a guide only, and may not depict actual inclusions included in prices. It is at the clients discretion to select inclusion features within the standard ranges and if optional upgrades are requested (subject to availability), additional costs will incur. Please refer to our inclusions brochures and your tender for specific details of the inclusions and exclusions. Surcharges may apply for more remote areas. Buildtech Homes reserves the right to revise plans, specifications, prices and use alternative suppliers without notice or obligation. Effective Nov 2021.

follow us today  